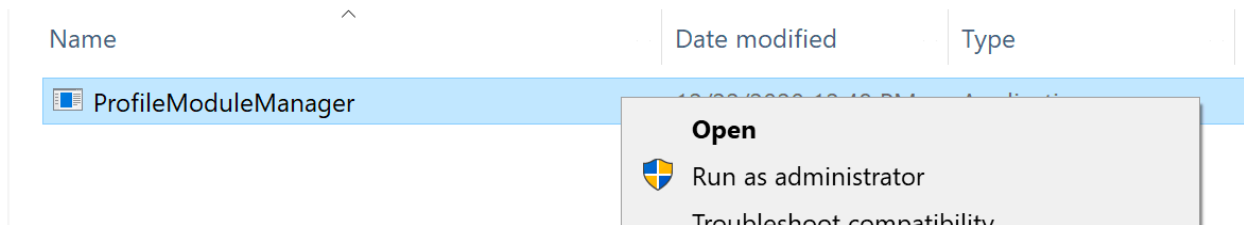


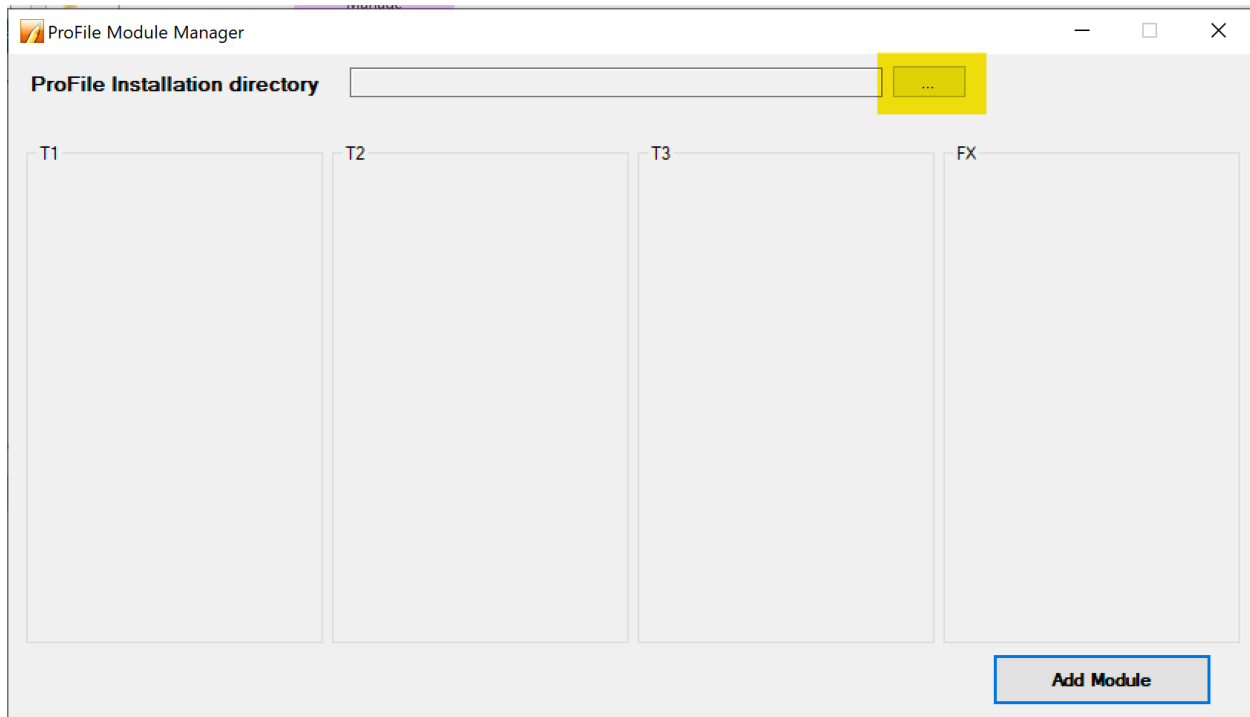
How to use the ProfileModuleManager.exe utility

- **Exit ProFile before running this utility**
- [Send the link to the customer through SalesForce/EMAIL](https://intuit.box.com/s/ygj2te0y8iore5fduwdwater1ts0rkb)
(<https://intuit.box.com/s/ygj2te0y8iore5fduwdwater1ts0rkb>)
- Unzip the ProfileModuleManager.exe utility – the extract location can be anywhere.
 - Double click on the zip file > then click and drag the files outside of the zip folder, or,
 - Right click and select Extract.
- Run “ProfileModuleManager.exe” in administrator mode: right click on the ProfileModuleManager.exe and select Run As administrator. Click "Yes" to allow the UAC.

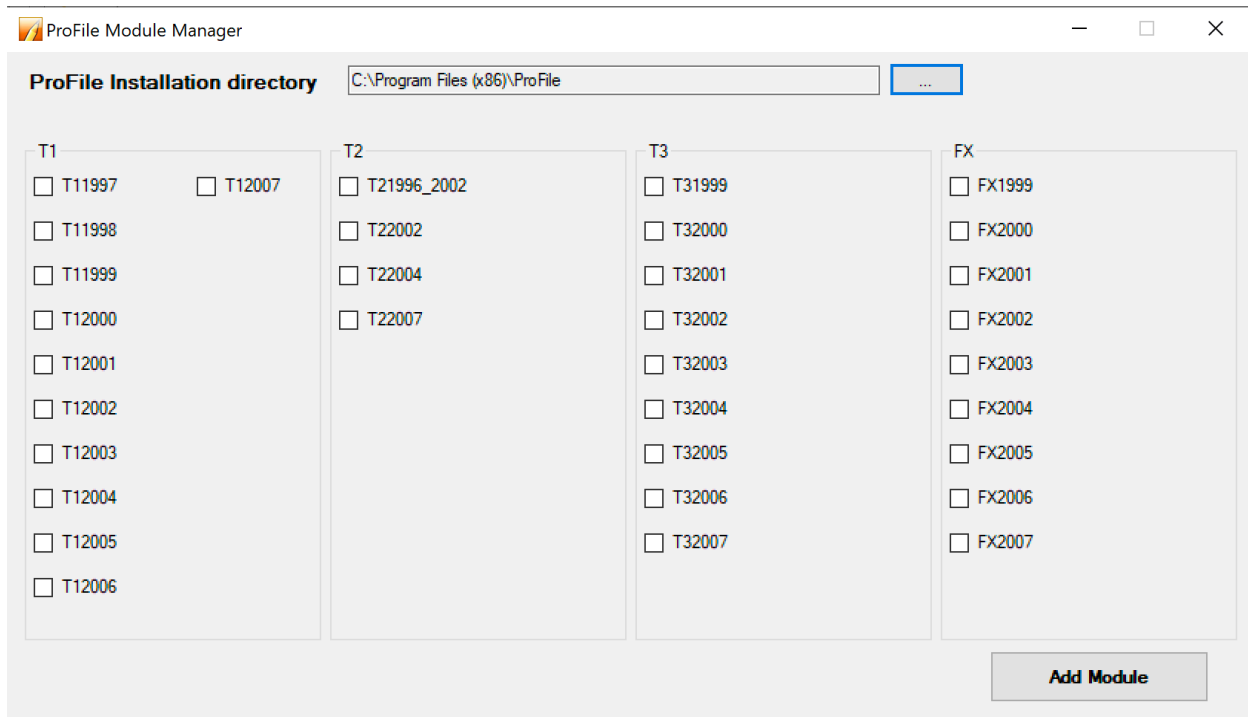


Once the utility is open, select the ProFile installation folder by clicking on the three dot button (highlighted in yellow below image).

- By default, ProFile is installed in: C:\Program Files (x86)\ProFile

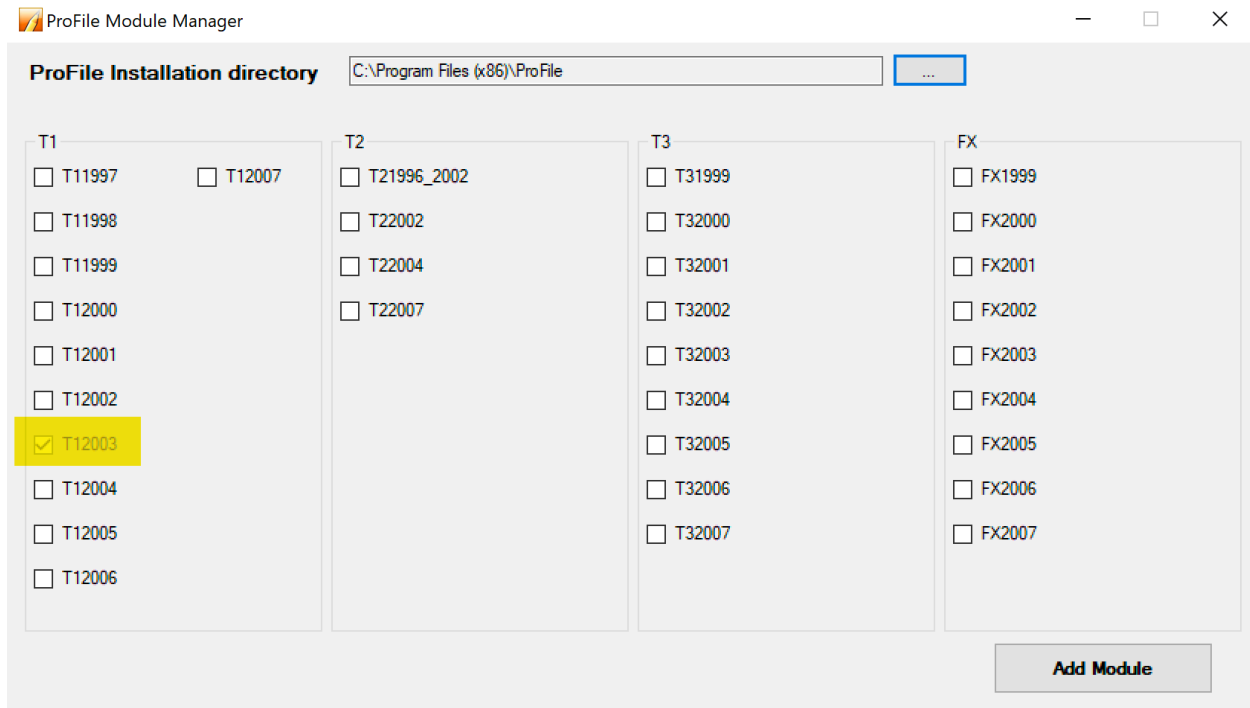


- Once the path to the installation folder is entered, the utility will display all of the modules available to install.
- Select the desired module from the list
- Click on the Add Module button to activate the module(s)



- Once the Add Module button is clicked, the Command Prompt will run automatically, as it attempts to register the module(s) selected (this may take a few minutes)
- Once the Command Prompt finishes, you can close the utility and run Profile to use the new module(s) added to the application.

Note: If you open the utility again to add more modules, any previously added module will be greyed out.



How to use the ProfileModuleManager.exe utility on a server

Follow the same steps on How to use the ProfileModuleManager.exe utility on the server.

Before you begin! Be sure to:

- **Exit ProFile.**
- **No users are accessing ProFile during that time**

Once you have completed the steps on the server, **re-run the Workstation installation** on the desired workstation.